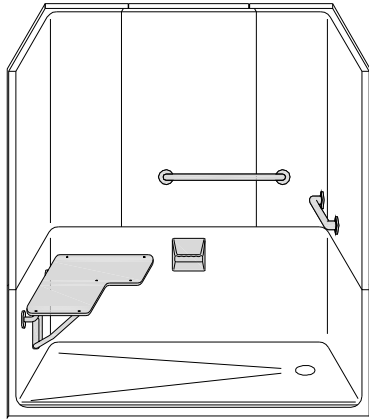
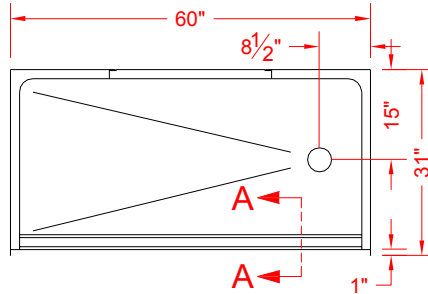


# MODEL: API4SS6030B22B

ALL ACCESSORIES AVAILABLE



**PERSPECTIVE VIEW - N.T.S.**  
**MODEL SHOWN HERE AS:**  
**RIGHT HAND DRAIN**



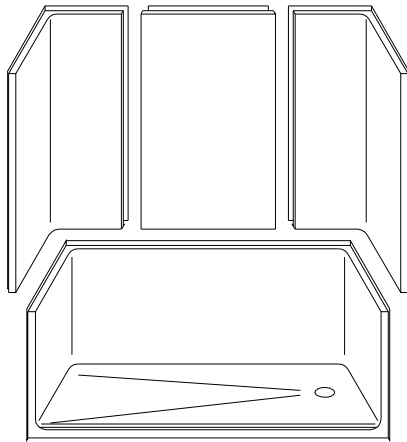
**TOP VIEW - SCALE  $\frac{3}{8}'' = 1'-0''$**



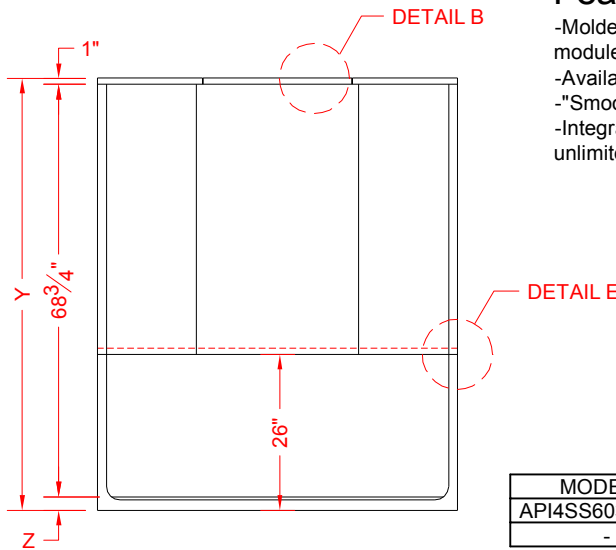
**BARRIER FREE**

## Features:

- Molded, 4 piece gelcoat/fiberglass shower module
- Available in various threshold heights
- "Smooth" wall finish, white (standard)
- Integral full wood backing for strength and unlimited accessory placement



**ASSEMBLY VIEW - N.T.S.**



**FRONT ELEVATION - SCALE:  $\frac{3}{8}'' = 1'-0''$**

	UNIT HEIGHT	THRESHOLD HEIGHT
MODEL #	Y	Z*
API4SS6030B22B	72"	2-1/4"
-	-	-

\* - SEE BACK FOR DETAIL SECTIONS

## PRODUCT SPECIFICATIONS:

- Multi piece shower module shall be constructed of gelcoat/fiberglass with full integral plywood backing
- Rough-In: Stud opening + 1/4"-0" Nominal Dimensions.

C.S.I. FORMAT SPECIFICATION TEXT AVAILABLE

## PRODUCT INFORMATION:

## ACCESSORIES:

### INSTALLED BY OTHERS:

- Grab bar
- Seat, folding
- Mixing valve, pressure balanced, lever handle, preplumbed tree to supply elbow
- Soap dish
- Curtain and rod
- Collapsible Rubber Water Retainer
- Semi-permanent Threshold Adaptor
- Caulkless drain

## CODES:

Designed and manufactured in compliance with the following standards and codes:

- A.N.S.I. Z124.2 Standards for Plastic Showers

## NOTICE OF LIMITATION:

- Does not meet:  
 I.P.C. International Plumbing Code  
 U.P.C. Uniform Plumbing Code

1-877-947-7769

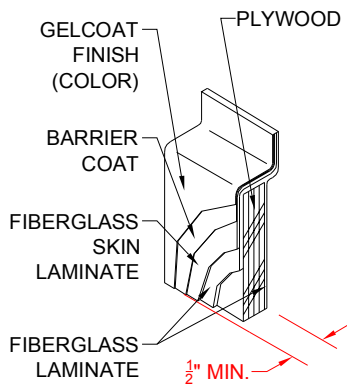
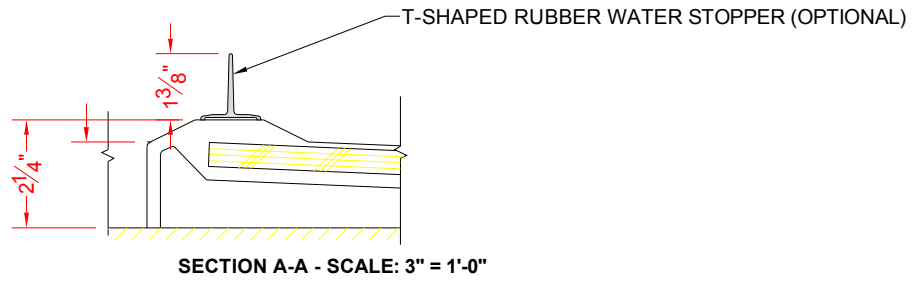
www.Accessible-Bathrooms.com

*We reserve the right to make revisions without notice in the design of fixtures or in packaging unless this right has specifically been waived at the time the order is accepted.*

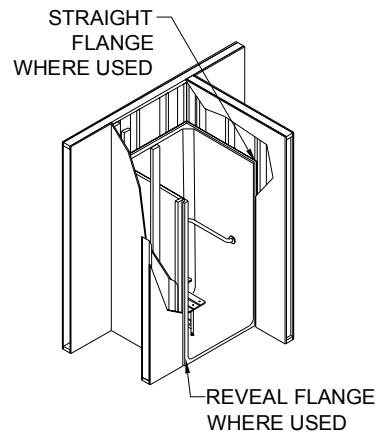
REV 6/08

page 1 of 2

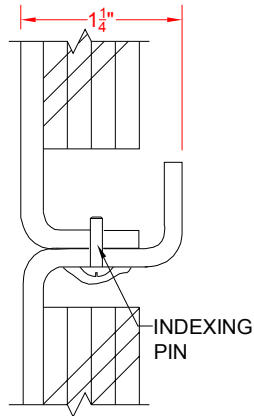
□ API4SS6030B22B



DETAIL B - SCALE: 3" = 1'-0"  
WALL SECTION DETAIL



DETAIL C - SCALE: NTS  
TYPICAL FRAMING



DETAIL E - SCALE: NTS  
WALL / PAN JOINT DETAIL